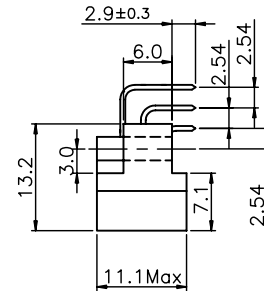
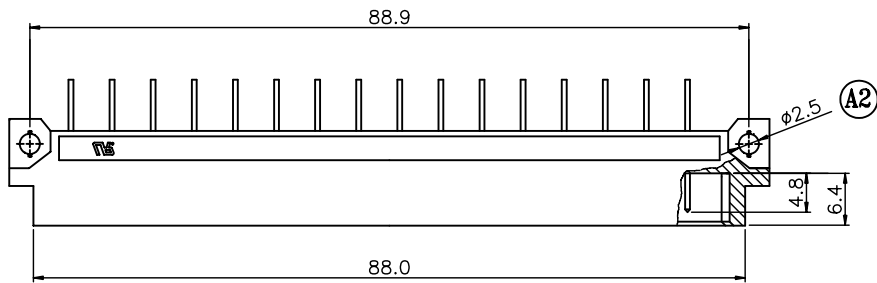


REV.	SPECIFICATION	ECN NO.	APPD.
A2	Please See A2	10/11'06	



Material:

Housing: High temperature housing withstands IR and VPR soldering methods.

Contacts: Brass.

Electrical Characteristics:

Current Rating: 2 AMP.

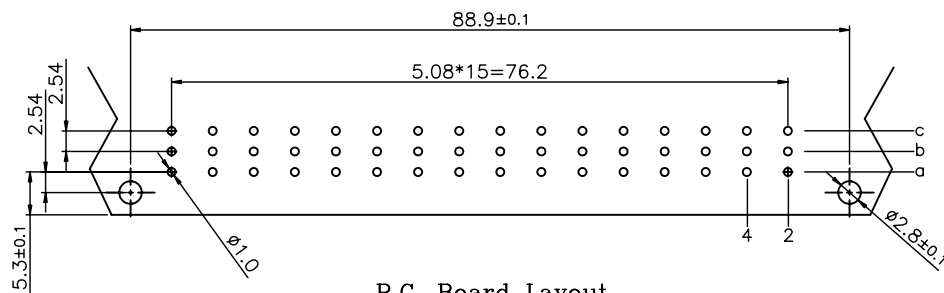
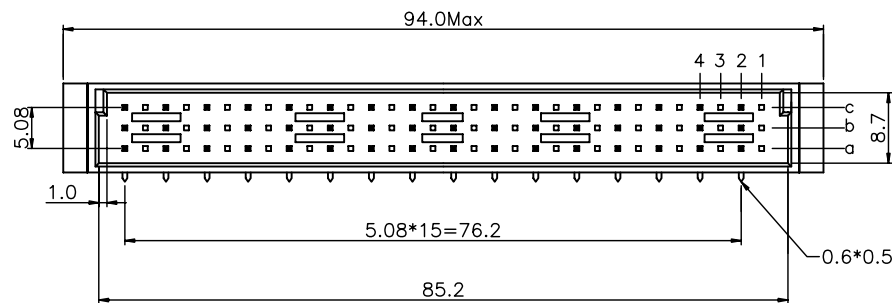
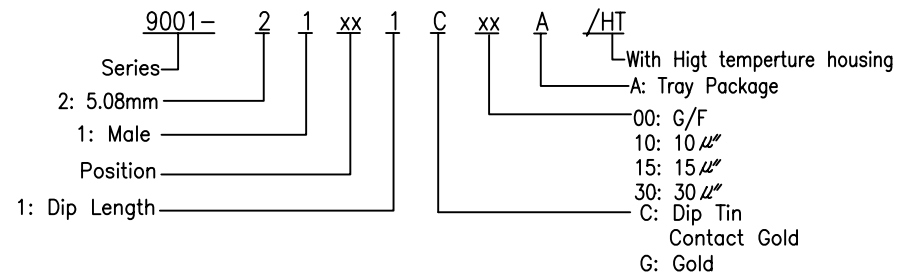
Dielectric Withstanding Voltage: AC 1000V For 1 minute.

Insulator Resistance: 1000MΩmin. at DC 500V.

Contact Resistance: 30mΩmax. at DC 100mA.

Operating Temperature: -55°C ~ +105°C.

(A2) *RoHS Compliant



P.C. Board Layout
(Tolerance: ±0.05)

Pitch	Position	Rows with Contacts	Contact Arrange	P/N
5.08mm	48	a b c		9001-21481C~
	32	a - c		9001-21321C~
	16	a - -		9001-21161C~

Tolerances	Drawn No.	9001D21011		Title:	
x = ±0.5	Projection			9001 Series	
.x = ±0.25	Unit	mm	Scale	DIN41612	
.xx = ±0.15	Drawn By	Wang Y Y	Scale	C Type Male	

OUPIN			
OUPIN ELECTRONIC(KUNSHAN) CO., LTD.			
P/N: 9001-21xx1CxxA/HT			
SHEET	1/1	Ver. No.	A2